



TAKUMA

Company Profile

English

Serving the next 50 years of customers Creating the next 100 years of society

Takuma started out as a boiler manufacturing company that was founded in 1938 based on a philosophy of contributing to society through its technology. We have continued to offer support day in and day out to customers and communities by manufacturing essential facilities that will serve them for more than 50 years, including low-environmental-impact waste incineration facilities, biomass power plants, and clean centers that play a key role in their areas.

What will be required of us in the future?

We must create a sustainable society with a vision that stretches out to 100 years in the future, for example by going beyond conventional approaches to address climate change and realize a cyclical economy, by leveraging technologies and services to manufacture the essential facilities that will serve the next 50 years of customers as a leading company in the area of the environment and energy.

Serving the next 50 years of customers.
Creating the next 100 years of society.

That summarizes Takuma's corporate value, and our mission.

We will continue to play an essential role for customers and society as a whole by creating essential products and services for the future while embracing a philosophy that has remained unchanged since the days of our founding.



Takuma: Supporting Daily Life and Industry

For nearly 90 years, Takuma has played a vital role in supporting people's daily lives and industries. Through the design and construction (plant engineering) of essential infrastructure such as waste treatment facilities, sewage treatment plants, and energy plants—as well as through comprehensive after-sales services. Takuma continues to contribute to environmental protection and the stable supply of energy by constructing and maintaining these critical facilities.

Municipal Solid Waste Treatment Plant

- Waste incineration plant
- Resource recycling and recovery plant
- Bulky waste crushing plant
- Biogas recovery plant

Energy Plant

- Non-fossil energy plants (biomass, etc.)
- Industrial waste treatment plant

Equipment and Systems Business

- Building equipment (air conditioning, water supply and drainage, fire extinguishing equipment)
- Various semiconductor and electronic device industrial systems

Package Boiler Business

- Steam boiler
- Vacuum-type water heater
- Heat medium oil boiler
- hybrid hot water system

Water Treatment Plant

- Sewage sludge-fueled power plant
- Sand filtration systems

Business Segment

Takuma Group is mainly engaged in EPC (engineering, procurement, and construction) and after-sales services (operation management, maintenance, and operation business) for environmental and energy plants in Japan and overseas.

Domestic Environment and Energy Business

EPC (engineering, procurement, and construction) and after-sales services (operation management, maintenance, and operation business) of various plants



Municipal Solid Waste Treatment Plant

- Waste incineration plant
- Resource recycling and recovery plant
- Bulky waste crushing plant
- Biogas recovery plant



Overseas Environment and Energy Business

EPC (engineering, procurement, and construction) and after-sales service (maintenance)

- Energy from waste plant
- Biomass power plant



Energy Plant

- Non-fossil energy plants (biomass, etc.)
- Industrial waste treatment plant



Package Boiler Business

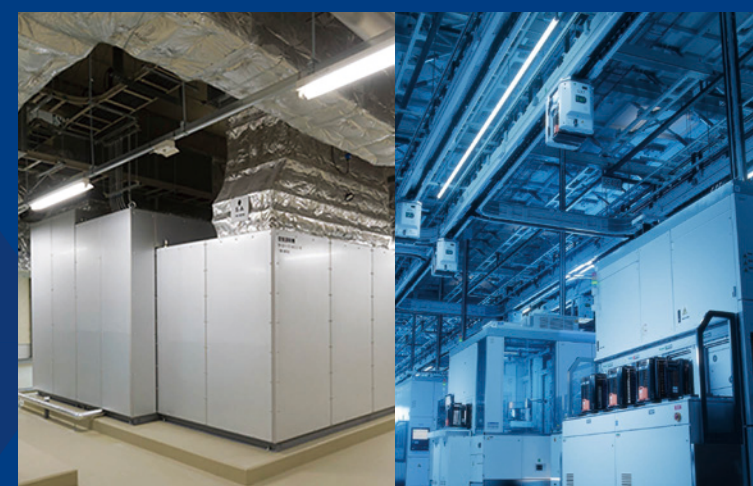
Manufacture and sale of and after-sales service related to heat source equipment and vacuum-type water heaters

- Steam boiler
- Vacuum-type water heater
- Heat medium oil boiler
- hybrid hot water system



Water Treatment Plant

- Sewage sludge-fueled power plant
- Sand filtration systems



Equipment and Systems Business

- Design and construction of building equipment (air conditioning, water supply and drainage, fire extinguishing equipment)
- Sale of and after-sales service for the semiconductor and electronic device industry

Takuma's History and Track Record of Innovation

Takuma's origins lie in the invention of Japan's first domestically developed boiler. Leveraging this technology, we went on to deliver Japan's first 24 hour operating waste incineration plant. Takuma's history has been one of continuous innovation, pioneering the development of products and technologies essential to society. Building on these innovations, we have grown into a group that focuses on plant engineering in the fields of environment and energy, including energy plants, municipal solid waste treatment plants, and water treatment plants.

1912	The first "TAKUMA boiler" invented by our founder, Tsunekichi Takuma
1930	Tsunekichi Takuma commended as one of the ten great inventors of Japan during the Meiji and Taisho periods (1868-1926)
1938	Takuma Boiler Manufacturing Co., Ltd. (Currently Takuma Co., Ltd.)
1942	Operation begins at Harima Factory
1949	Bagasse fired boiler, the first product of its kind in the industry, exported
1958	Business expanded into the environmental facility sectors, including waste incineration and water treatment plants
1961	Operation begins at Kyoto Factory (Currently Nippon Thermoener Co., Ltd. Kyoto Factory)
1963	Japan's first 24 hour operating waste incineration plant delivered
1965	The first industrial waste treatment plant with waste heat boiler delivered
1972	Company renamed Takuma Co., Ltd.
1973	Japan's first step grate stoker type sewage sludge incineration plant with heat recovery boiler delivered
	The first bulky waste crushing and sorting plant delivered
1975	Bulk production begins on "vacotin heater", the world's first vacuum-type hot water heater
1979	The first upflow moving-bed sand filtration system (Uniflow Sand Filter) delivered
1986	The first overseas delivery of a waste treatment facility completed (U.S.A.)
1998	Japan's largest waste incineration plant delivered
2005	Takuma Hanyokikai Co., Ltd. and Ebara Boiler Co., Ltd. merged and renamed Nippon Thermoener Co., Ltd.
2010	Energy from Waste plant delivered in Europe (U.K.)
2013	Operation of the TAKUMA Solar Power Plant began
2015	Established Takuma Energy Co., Ltd. and entered the power retail business
2019	Opened "Solution Lab," our remote monitoring/operation support center
2020	New TAKUMA Building (Training Center) completed
2023	Harima Factory renewal construction completed Opened "Supply Lab," after-sales service facility



Our founder, Tsunekichi Takuma



1963
Japan's first 24 hour operating waste incineration plant

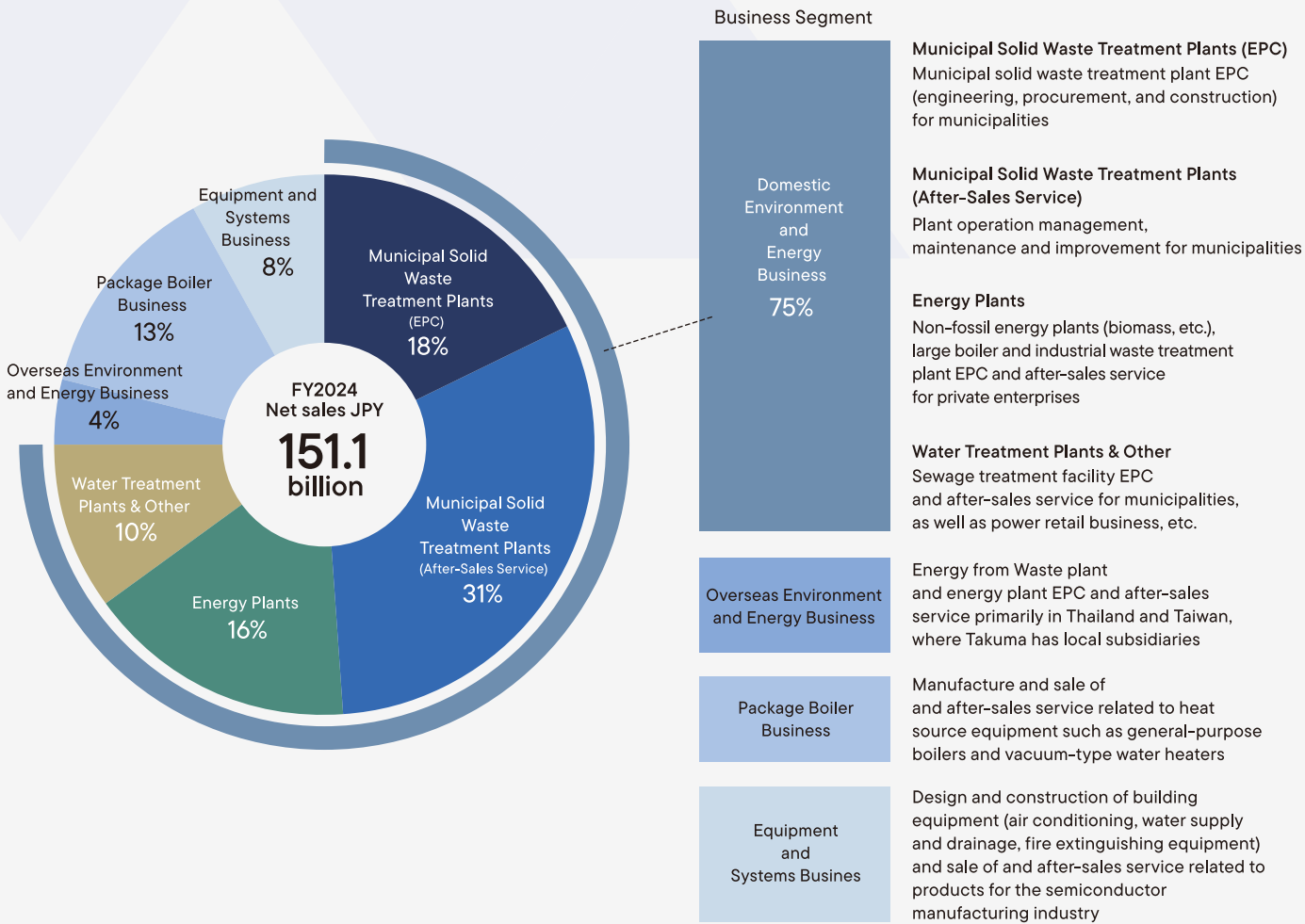


1975
Bulk production begins on "vacotin heater", the world's first vacuum-type hot water heater



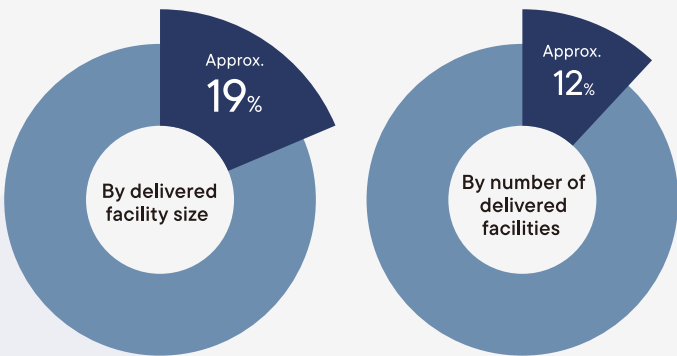
2023
New Harima Factory

Net Sales Share by Segment



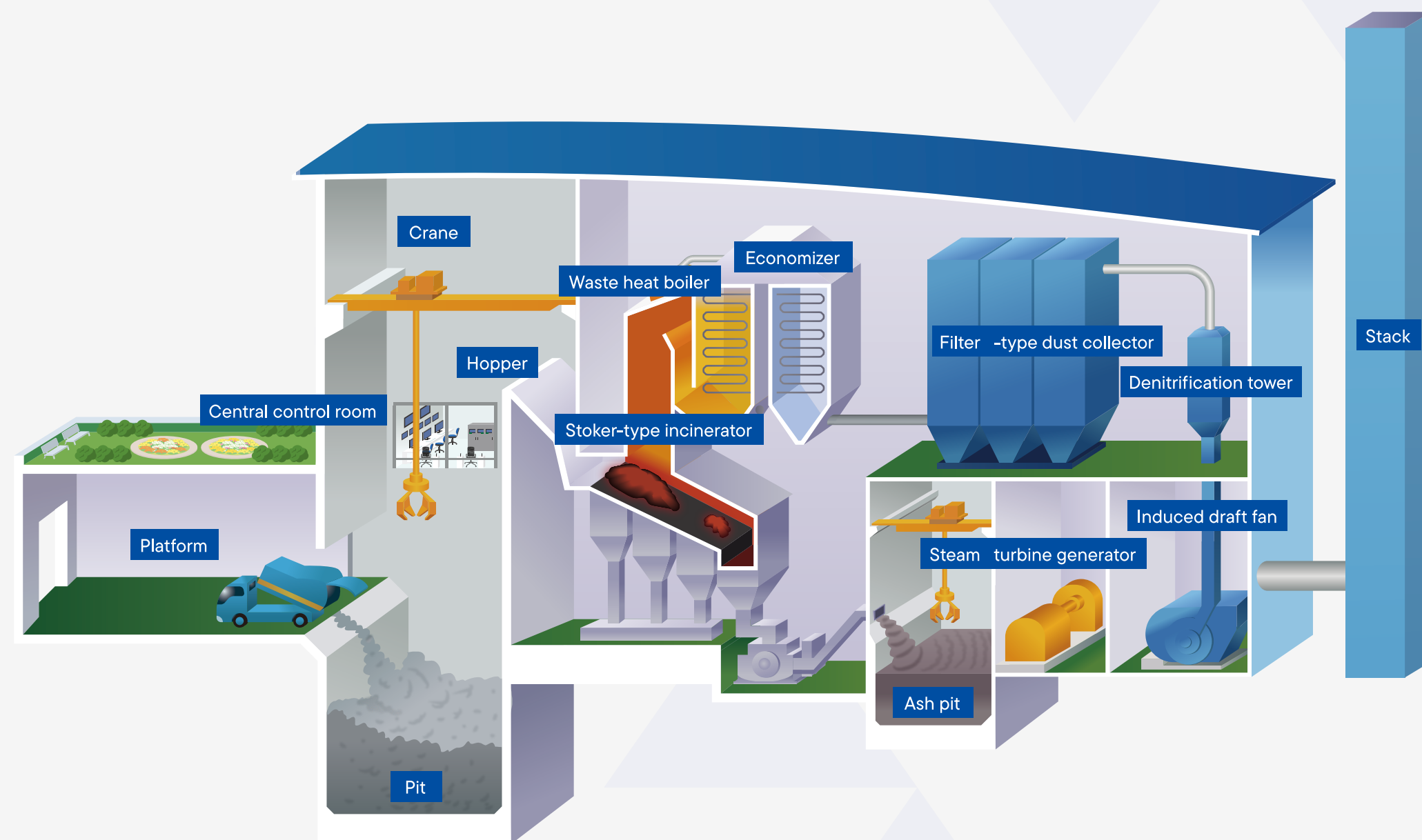
Municipal solid waste treatment plant with one of the top market shares in Japan

Since the Company's installation of Japan's first 24 hour operating waste incineration plant in 1963, Takuma has constructed approximately 370 waste incineration plants, more than any other domestic manufacturer. We can boast the largest share in the domestic market for the construction of these plants to date, in terms of both number and scale of facilities. Approximately 110 of these facilities remain in operation today, treating the waste of approximately 24 million people (a sixth of the country's population) and providing support for vital aspects of numerous people's lives. In addition, we boast a top-class number of deliveries of energy plants and water treatment plants, contributing to the spread of renewable energy and environmental conservation.



Takuma's Plants and Technological Capabilities

Takuma's strength lies in its unique plant and system engineering capabilities that take into consideration the entire lifecycle of a plant –from construction to operation and maintenance, originating from its expertise in boiler installation and further refined through extensive after-sales service.



AI-based combustion control system

Waste incinerator operators can slash manual operation by 99% by installing Takuma's Intelligent Control System (ICS), an AI-based combustion control system. In addition, we have established technology that allows two operators to operate a facility in a safe and stable manner, which is a lower staffing requirement than in the past, thanks to remote monitoring and control from our Solution Lab.

Solution Lab

Solution Lab provides remote monitoring and operational support by monitoring plant status and operating conditions 24 hours a day. It offers high-quality services that utilize the latest information and communications technologies (ICT) to provide optimized solutions for customers and support to help ensure safer, more secure plant operation.



1 Combustion Technology

Building on core boiler combustion technologies, Takuma has developed the capability to stably burn a wide range of fuels and waste materials, including biomass, municipal solid waste, and sewage sludge.

2 Heat Recovery Technology

By employing systems that incorporate high-temperature, high-pressure boilers and other advanced technologies, we maximize the effective utilization of energy contained in waste and fuels by converting it into steam and electricity.

3 Flue Gas Treatment Technology

Our flue gas treatment systems remove harmful substances such as dust, acidic gases, and dioxins from exhaust emissions, preventing environmental pollution and ensuring regulatory compliance.

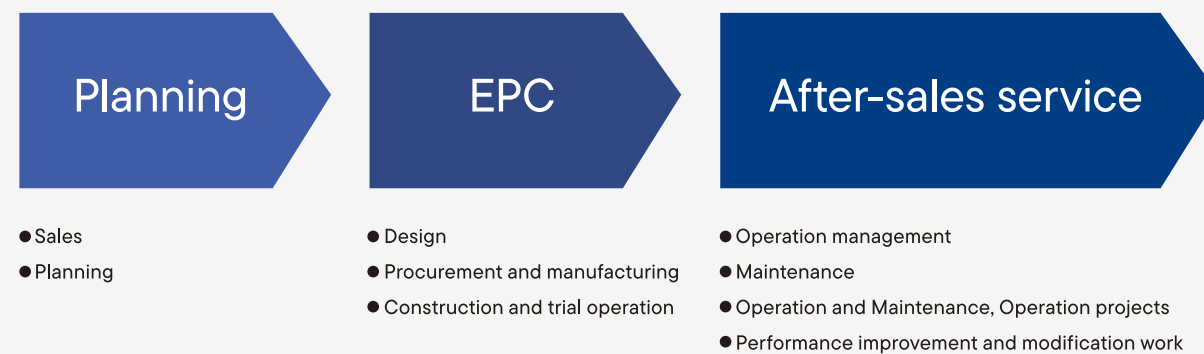
4 Operation and After-Sales Services

To achieve stable operation, we perform operation management to maximize the facility's functionality, periodic inspections, maintenance and major improvement work to prevent problems and ensure safe and stable plant operation.

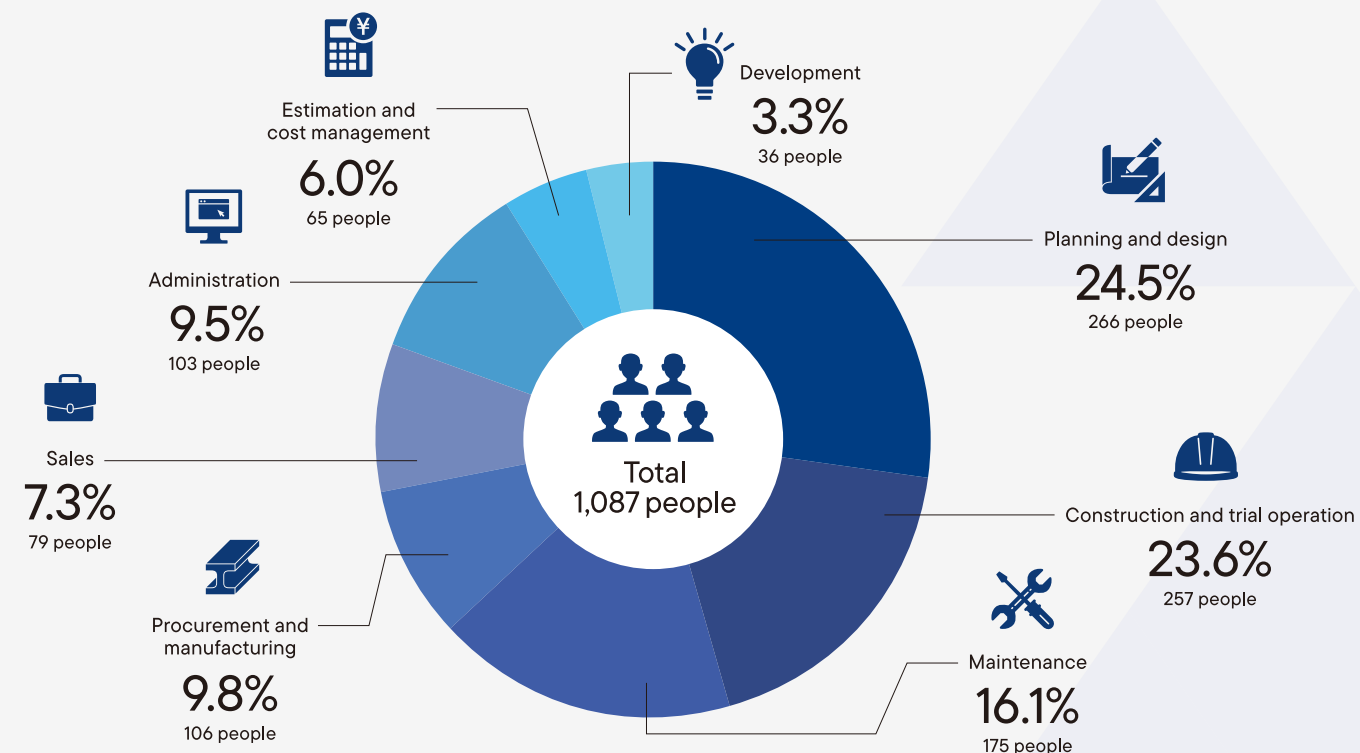
What Takuma Offers

Takuma has established an integrated in-house engineering system that covers the entire process from planning to completion to deliver plants that meet the required specifications and performance demanded by our customers. After completion, we provide prompt and sincere support to address operational issues and challenges as they arise, continuously building strong, trust-based relationships with our customers.

Consistent engineering system from planning to after-sales service



Takuma's department composed of specialists



Takuma's achievements (as of the end of March 2025)

Municipal solid waste treatment plant Over 370 plants, Worldwide



Recycling plant Over 90 plants, Japan



Biomass power plant Over 650 plants, Worldwide



Industrial waste treatment plant Over 120 plants, Worldwide



Step grate stoker type sewage sludge incineration Over 20 plants, Japan



Upflow moving-bed sand filtration system Over 2,900 units, Japan



Takuma Group Network (as of April 1, 2025. Details are available on our corporate website.)

Takuma Business Office

- 1 Head Office
- 2 Osaka Office
- 3 Tokyo Branch
- 4 Hokkaido Branch
- 5 Tohoku Branch
- 6 Chubu Branch
- 7 Kyushu Branch
- 8 Harima Factory
- 9 Taipei Branch

Takuma Group Company

Domestic Environment and Energy Business

- 1 Takuma Technos Co., Ltd.
- 2 Takuma Engineering Co., Ltd.
- 3 Kyoritsu Setsubi Co., Ltd.
- 4 Hokkaido Sanitary Maintenance Co., Ltd.
- 5 Takuma Technos Hokkaido Co., Ltd.
- 6 Takuma System Control Co., Ltd.
- 7 Takuma Plant Co., Ltd.
- 8 iMET Co., Ltd.
- 9 Kankyo Sol-Tech Co., Ltd.
- 10 Energy Mate Co., Ltd.
- 11 Iwate-Kenpoku Clean Co., Ltd.
- 12 Takuma Energy Co., Ltd.
- 13 TECHNO LINKS Inc.
- 14 Tochigi High Trust Co., Ltd.
- 15 Ecos Yonezawa Co., Ltd.
- 16 Nagaizumi High Trust Co., Ltd.
- 17 Fujisawa High Trust Co., Ltd.
- 18 Hitachinaka-Tokai High Trust Co., Ltd.
- 19 Anan High Trust Co., Ltd.
- 20 Kashiwara High Trust Co., Ltd.
- 21 Kurume High Trust Co., Ltd.
- 22 Hokutan High Trust Co., Ltd.
- 23 Suwako High Trust Co., Ltd.
- 24 Imabari High Trust Co., Ltd.
- 25 Uwajima High Trust Co., Ltd.
- 26 Machida High Trust Co., Ltd.
- 27 Hakodate High Trust Co., Ltd.
- 28 Suminoe High Trust Co., Ltd.
- 29 Okinoshima High Trust Co., Ltd.
- 30 Nishichita High Trust Co., Ltd.
- 31 Saitama High Trust Co., Ltd.
- 32 Komaoka High Trust Co., Ltd.

Overseas Environment and Energy Business

- 33 Taiden Environtech Co., Ltd.
- 34 Siam Takuma Co., Ltd.

Package Boiler Business

- 35 Nippon Thermoener Co., Ltd.
- 36 IHI Packaged Boiler Co., Ltd.

Equipment and System Business

- 37 Sunplant Co., Ltd.
- 38 Dan-Takuma Co., Ltd.

Company Outline

Name	TAKUMA CO., LTD.
Head Office	2-2-33 Kinrakuji-cho, Amagasaki, Hyogo 660-0806, Japan TEL +81-6-6483-2609 FAX +81-6-6483-2751
Main Business	The design, construction and superintendence of a wide variety of boilers, plant machinery, pollution prevention plants, environmental equipment plants, and heating and cooling equipment and feedwater / drainage sanitation equipment and facilities. The design, construction and superintendence of civil, architecture and other works.
Representative Director	Kunio Hamada, President and CEO
Established	June 10, 1938
Capital	13,367 Million yen
Net sales	[Consolidated] 151,161 Million yen (FY2024) [Non-consolidated] 84,769 Million yen (FY2024)



Permits and registrations

Takuma Business Office

- Construction license (Minister of Land, Infrastructure, Transport and Tourism license, Special 2-6129)
- Construction consultant registration (Minister of Land, Infrastructure, Transport and Tourism registration, Construction 06-10202)
- First-class architect office registration (01A02903)
- ISO 9001 (Quality Management System) certification

Harima factory

- ISO 9001 (Quality Management System) certification
- ISO 14001 (Environmental Management System) certification
- Manufacture of thermal equipment for power generation (Ministry of Economy, Trade and Industry)
- Permission to manufacture boilers and pressure vessels (Ministry of Health, Labour and Welfare)
- Permission to manufacture cranes (Ministry of Health, Labour and Welfare)
- Manufacture of specific high-pressure gas facilities (Ministry of Economy, Trade and Industry)
- Type I Process Certification (Thermal Power Generation) (Private Sector Product Certification, Electricity Business Act)



JQA-1952 ISO9001
Head Office, Osaka Office,
Tokyo Branch, Hokkaido Branch,
Chubu Branch, Kyushu Branch,
Harima Factory



JQA-EM0313 ISO14001
Harima factory

Corporate website



IR information



YouTube





TAKUMA CO., LTD.